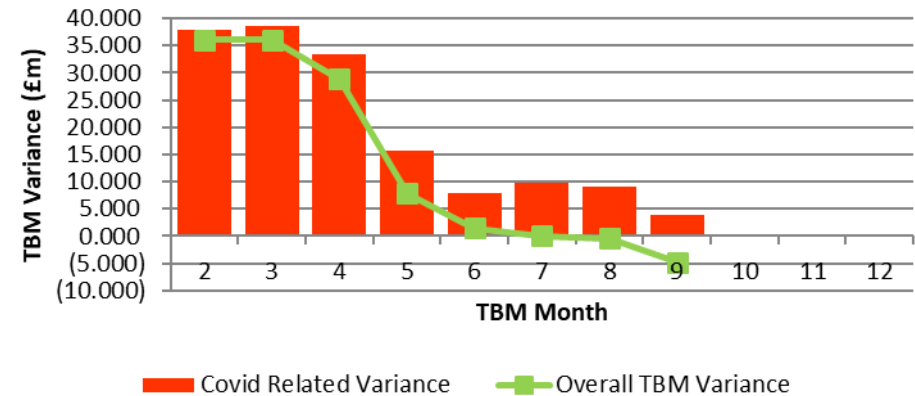


### COVID Related Variance Compared to Overall TBM Variance

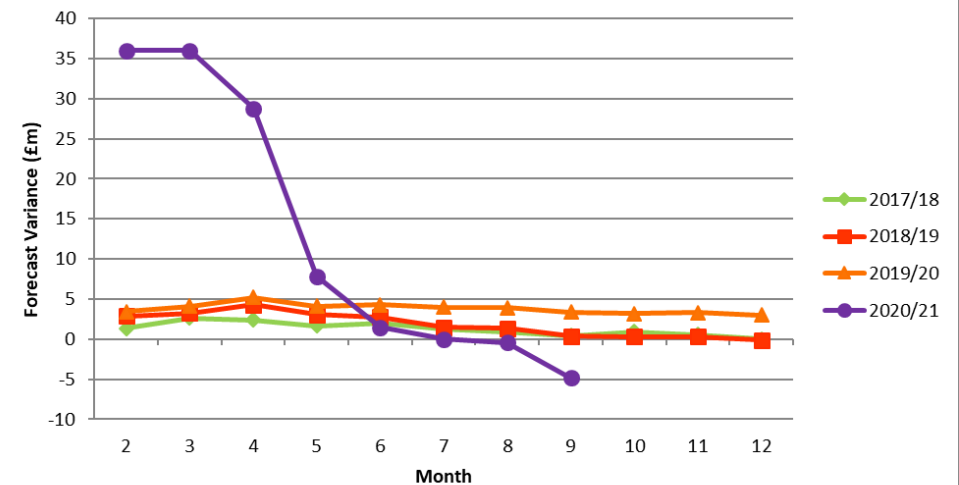


### Direction of Travel

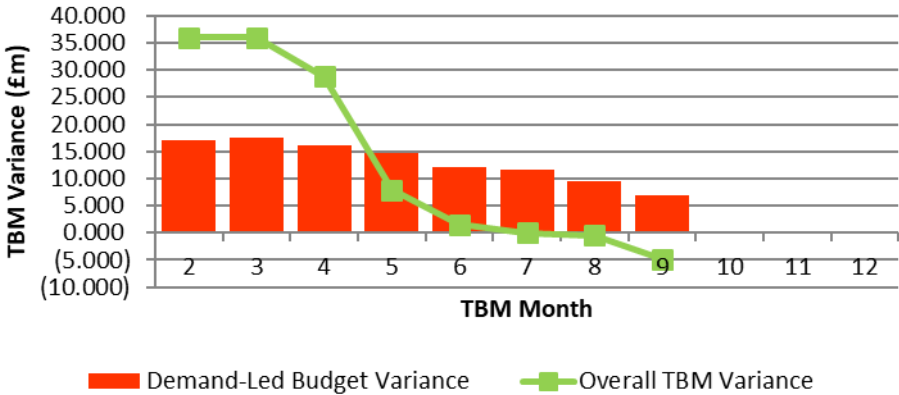
Directorate/Fund	Forecast Variance Month 9	Forecast Variance Month 9	Change From Month 7	RAG Rating Month 9
	£'000	%		
General Fund Services:				
Families, Children & Learning	765	0.8%	↑	Red
Health & Adult Social Care	6,115	9.4%	↑	Red
Economy, Environment & Culture	7,830	19.7%	↑	Red
Housing, Neighbourhoods & Communities	1,541	9.2%	↑	Red
Finance & Resources	1,052	5.0%	↑	Red
Strategy, Governance & Law	149	2.7%	↑	Amber
Corporately-held Budgets	(22,264)	-271.4%	↓	Green
Total General Fund	(4,812)	-2.1%	↑	Green
Dedicated Schools Grant (DSG)				
	(267)	-38.0%	↑	Green
Housing Revenue Account				
	(583)	-14.9%	↓	Green

↑ = Improving position, ↓ = Worsening position

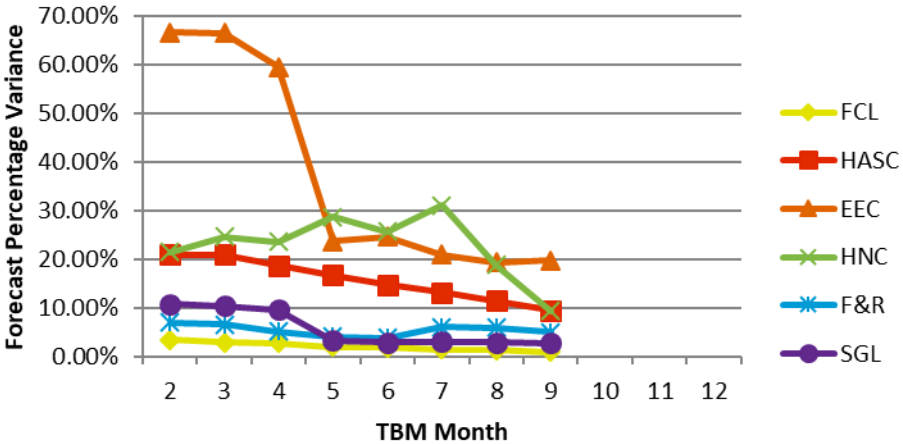
### TBM Forecasts



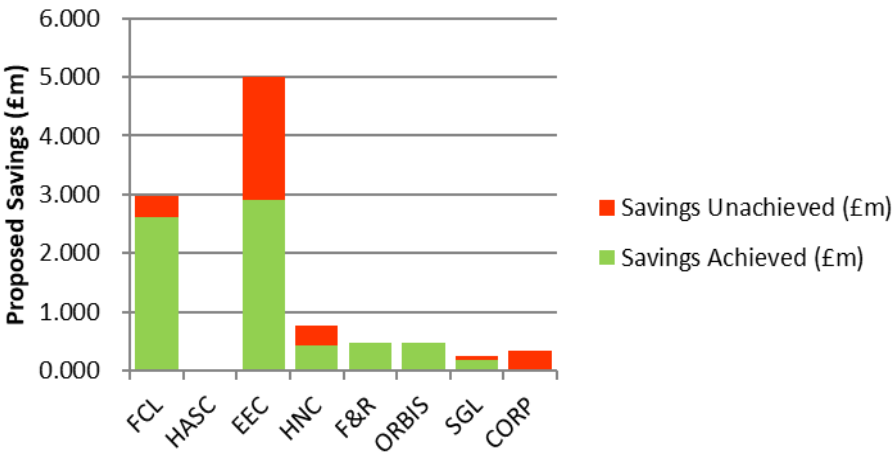
Demand-Led Variance Compared to Overall TBM Variance



Forecast Percentage Variance



Savings Monitoring



TBM Forecast Movement Month 7 to Month 9

